

Better to be sustainable

Stainless steel reinforcement

When to use stainless steel?

- When structures are exposed to high chloride environments and/or corrosive industrial environments
- In roads and bridges where de-icing salts are applied
- When non-magnetic reinforcement is necessary or desirable

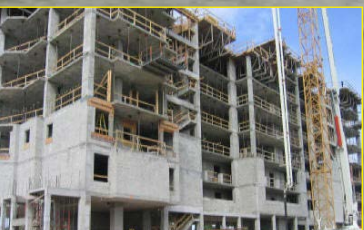
Learn more on stainlesssteelrebar.org



Roldan



Stainless Bar Sales



Kevin Cornell/Salit Specialty Rebar