

Estadio Wanda Metropolitano

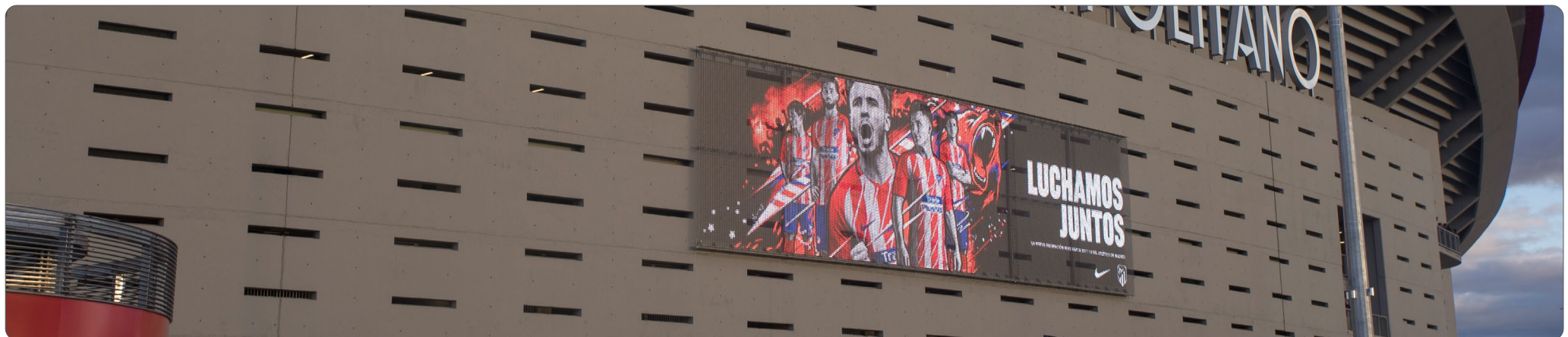
Madrid, Spain

Bigger, more convenient, more spectacular: the new stadium of the top Spanish club Atlético Madrid is among the very elite of European soccer arenas. After six years in construction, the tradition-steeped club opened the doors of the Estadio Wanda Metropolitano in the north-east of the Spanish capital. A large screen on the western façade above the main entrance gets arriving fans in the mood for the match ahead with video sequences from previous games and emotional images. Yet the transparent MEDIAMESH® system from GKD nevertheless blends in perfectly with the puristic façade design. As a result, the spectacularly sweeping roof with integrated LED bands, the bright, horizontally

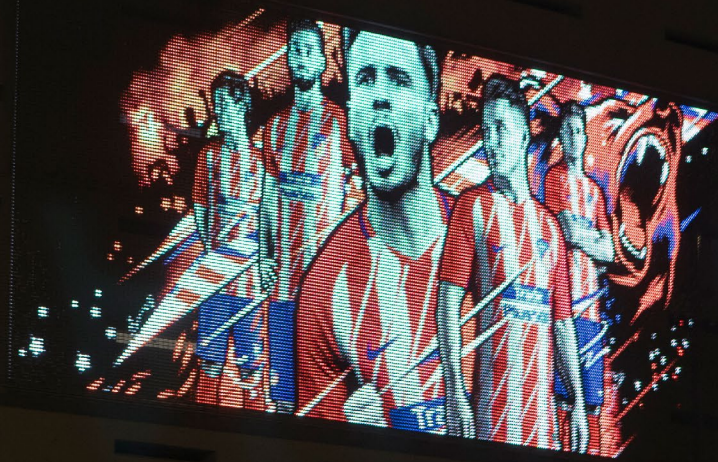
perforated façade and the MEDIAMESH® display all blend in together perfectly.

The stadium did not have to wait long to score its first major success: just a few days after it was opened, the European soccer governing body UEFA awarded the Champions League final to the Estadio Wanda Metropolitano. Atlético Madrid will therefore host the final of the continent's top club competition on June 1, 2019 – an event that last took place in Spain at the Santiago Bernabéu stadium of local rivals Real Madrid in 2010. The spectators at the Champions League final will then enjoy a fitting welcome from the imposing MEDIAMESH® screen from GKD.

Environment:	urban
Material:	316 stainless steel
Manufacturer:	GKD Mediamesh
Photographs:	GKD
More information:	gkd-group.com



WANDA METROPOL



**LUCHAMOS
JUNTOS**

la gran pasión por una gran idea. siempre.

