

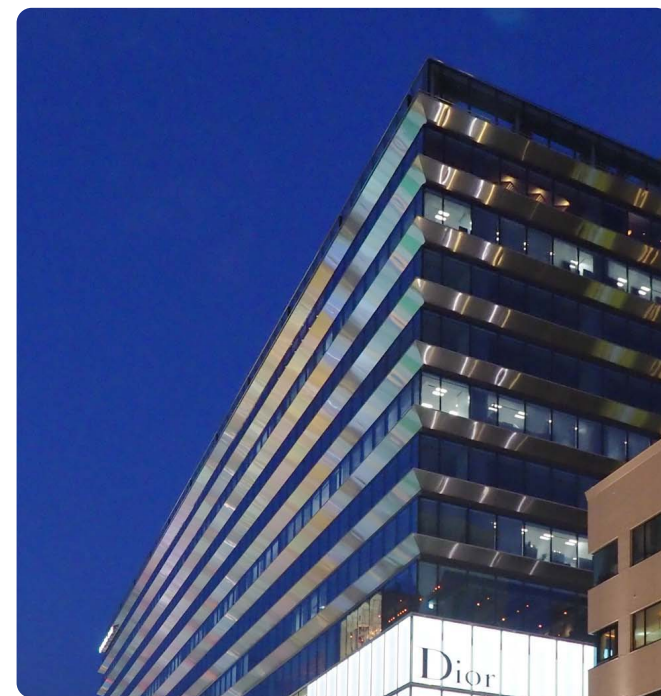
## GINZA SIX

### Tokyo, Japan

GINZA SIX was designed by the architectural firm Taniguchi and Associates and built by Kajima Corporation as a redevelopment project covering two blocks in Tokyo's Ginza neighbourhood. The building, which has 13 floors above ground and 6 floors underground, has a total area of 148,000 square meters. For the trademark eaves, which can be seen from a distance, Mitsubishi Chemical Corporation's stainless steel composite material "ALPOLIC/fr®SCM" which uses NSSC®220M was applied. This ferritic stainless steel has excellent rust-resistance and a lower thermal expansion coefficient. Moreover, SUS304 with a specially finished surface was utilized for the exterior walls as well as the interior walls of the elevator hall. The building is recognized as a new symbol of Ginza, one of the most famous areas for shopping and sightseeing in Japan.



Environment:	Urban
Materials:	Eaves: NSSC®220M 0.3mm thick, hairline polished finish. Exteriors and interiors: SUS304, 5.0mm thick, polished and shot blasted
Architects:	Taniguchi and Associates, Kajima Corporation
Copyright:	ginza6.tokyo
More information:	nssc.nssmc.com





YVES SAINT LAURENT



GSIX

SAINT LAURENT  
PARIS

NBC

