

Roberto Cavalli Caffè

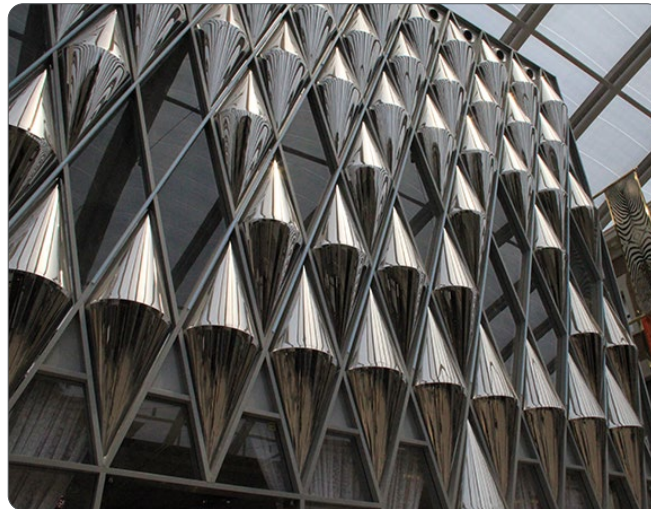
Kuwait, Kuwait

Roberto Cavalli is an Italian fashion designer, born on 15 November 1940 in Florence, Italy. The design for The Avenues was inspired by the natural rock formations, sand and sky found in Kuwait. The glazed arched canopy roof gives the feeling of an outdoor space which is emphasised by The Grand Avenue being designed to look and feel like a Boulevard with the living palms lining the street. The walkways are paved with stone from around the world – China, Italy, Spain and Turkey – which underpins the international theme. The Cavalli Caffè is a significant presence within The Avenues. The Cavalli chain in the Middle East is operated by Pragma Group who are based in the Lebanon. The café, serving Italian food, accommodates 80 customers with both inside and outdoor seating.

What is unexpected is the design of the exterior of the caffè which bears no resemblance to any other Cavalli stores or cafés. Double-ended polished stainless steel cones create elongated diamond footprints against the glass. There are twelve or thirteen cones wide on the façade and thirteen or fourteen deep with some being left unmounted which reveals the diamond shaped glazed aperture behind. There are LED purple lighting strips running along one edge of the aluminium diamonds which, when illuminated, form striking diagonal lines of purple light. The effect is to create a mesmerising and

unforgettable façade.

The cones were handmade from 2 mm 316 grade stainless steel in the Double Stone Steel factory. Fabrication included the forming, welding and polishing. Each section was hand-polished to a Super 8 finish. Stainless steel was chosen as it was found to be the best mirror effect that was required for Roberto Cavalli's design concept. Originally the material was to be GRP (Glass-Reinforced Plastic) with a chromed finish. This method of fabrication had to be abandoned as there were no tanks large enough in which to chrome the sections.



| | |
|-------------------|---|
| Environment: | urban |
| Material: | 316 stainless steel, 2 mm thick and hand polished to super 8 finish |
| Manufacturer: | Double Stone Steel |
| Architects: | In-house Roberto Cavalli |
| Photographs: | Double Stone Steel |
| More information: | doublestonesteel.com |



